

# PERFORMANCE VENUES ENABLE US

The following specifications include lists equipment available to hirers. Most of the equipment is included in the cost of the hire. If the equipment listed is an extra cost, it is noted within the table. Please note that any equipment outside the hire cost should

be requested well in advance of the show, to guarantee it is available for use. If any further equipment is required, Performance Venues can contact external companies for hire quotes if requested. There is an equipment request form at the end

# Venue details

## Stage Dimensions

Stage section	Width	Depth	Height to Grid.
Main Stage	8.8m (ex. wings)	7.32m	8.1m
Baptistery	7.19m	6.4m	8.64m

Notes:

Baptistery has an elevation of 0.45m above stage level.

## Clearances

	Height	Width
Loading Door	2.08m	3.12m
Wings	2.4m	2.85m

Notes:

The fire escape SR is to be kept closed at all times and only used in the event of an emergency. It is not to be used for loading in. Please ask the staff member on duty to open the loading doors if they are required.

A ramp is available to assist loading in.

An evacuation route of 1.2m is required along both wings at all times. This is to be kept clear of trip hazards and any cables that cross it must be under cable matting. Rolls of matting that run the length each side are available.

## **Seating Capacity**

<b>Layout</b>	<b>Stalls capacity</b>	<b>Circle capacity</b>	<b>Total</b>
End-on/Proscenium Arch	100/112 (with extra row)	77	177/189
Thrust	134	77	211
Arena	168	77	245
Half Cabaret	100 + 54 (9 tables)	77	231
Full Cabaret	102 (17 tables, no stalls)	77	179

### Notes:

Thrust and Arena layouts require the use of Metrodeck and will therefore reduce the amount available for staging.

Seating sections in Thrust, Arena, Half and Full Cabaret are unreserved and subject to general admission.

The circle seating area is optional; smaller shows may not wish to open the circle, depending on ticket sales. If the circle seating is open, extra ushers are required.

## **Staging Equipment**

<b>Item</b>	<b>Number</b>
Metrodeck 0.9x1.8m	11
Metrodeck 0.9x0.9m	4
Metrodeck triangle	2
Metrodeck Quadrant	2
Metrodeck Handrails 0.8m wide	14

Notes:

All set above 0.6m requires handrails.

All set construction must be agreed with theatre staff and demonstrated with full scale drawings prior to construction.

All evacuation routes must be kept clear to a width of 1.2m

### **Non-fixed Drapery and Screens**

<b>Item</b>	<b>Amount</b>
Stage Legs 2.43x6.7m	4
Stage Borders 4.27x2.75m	4
Baptistery wing masking 1.5x5m	2
Free standing masking flats 1.25x3m	4
Projection screen 3.6x2.7m	1

Notes:

All drapery is black wool surge.

Any fabric brought in to the theatre must have proof of fire protection.

The projection screen can be flown or stood on legs.

The projection screen is ideally set up for back projection.

# Sound

## Equipment list

Loudspeakers (Main PA)	Number
Nexo Geo M6 Array	1
Nexo LS18 Sub	1
Nexo PS10	2

Active Speakers (Stage Mon)	Number
Yamaha DHR15	2

Control	Number
Yamaha QL1	1
Yamaha Rio 1608-D Stage Box	1

Microphones	Number
AKG C1000s	4
Sure SM58	4
Sure SM57	4

Other	Number
Tapco DB-1A DI Box	2

# Lighting

## Equipment list

Fixtures (intelligent)	Number
ETC S4 Lustr2 LED Light engine	40
ETC S4 Fresnel adapter	16
ETC 50 deg LED lens	12
ETC S4 15-30 deg zoom lens	12
ETC Colorsource LED Par	6
ETC Colorsource LED Spot 50°	2
ETC Colorsource LED Spot 15-30°	2
Prolights Jetspot 3	4

Control	Number
ETC Geo 5	1

Note:

A EOS show file with the standard patch is available on request.

# Power

All of the 16a ceeform sockets in the Drama Studio can be switched to carry 16a of hot power at 230v. There are 4 banks of 6 sockets at stage level. The Drama Studio carries a small stock of 16a extension cables, splitters and 13a adapters. Any equipment that draws a significant amount of power should be cleared with the venue well in advance of the get

-in. All portable equipment must have evidence of PAT before it used in the venue.








# Rigging

The Drama Studio has 10 hemp rope flying bars, covering the upstage area and the baptistery. These have a SWL of 120kg, evenly distributed, and can be use to fly drapes and scenery. Only members of Drama Studio staff and any fully trained crew may operate the flying bars. The

Drama Studio also has a stock of heavy duty rigging equipment. All rigging and hanging must be checked over by a member of staff before the bars are raised.

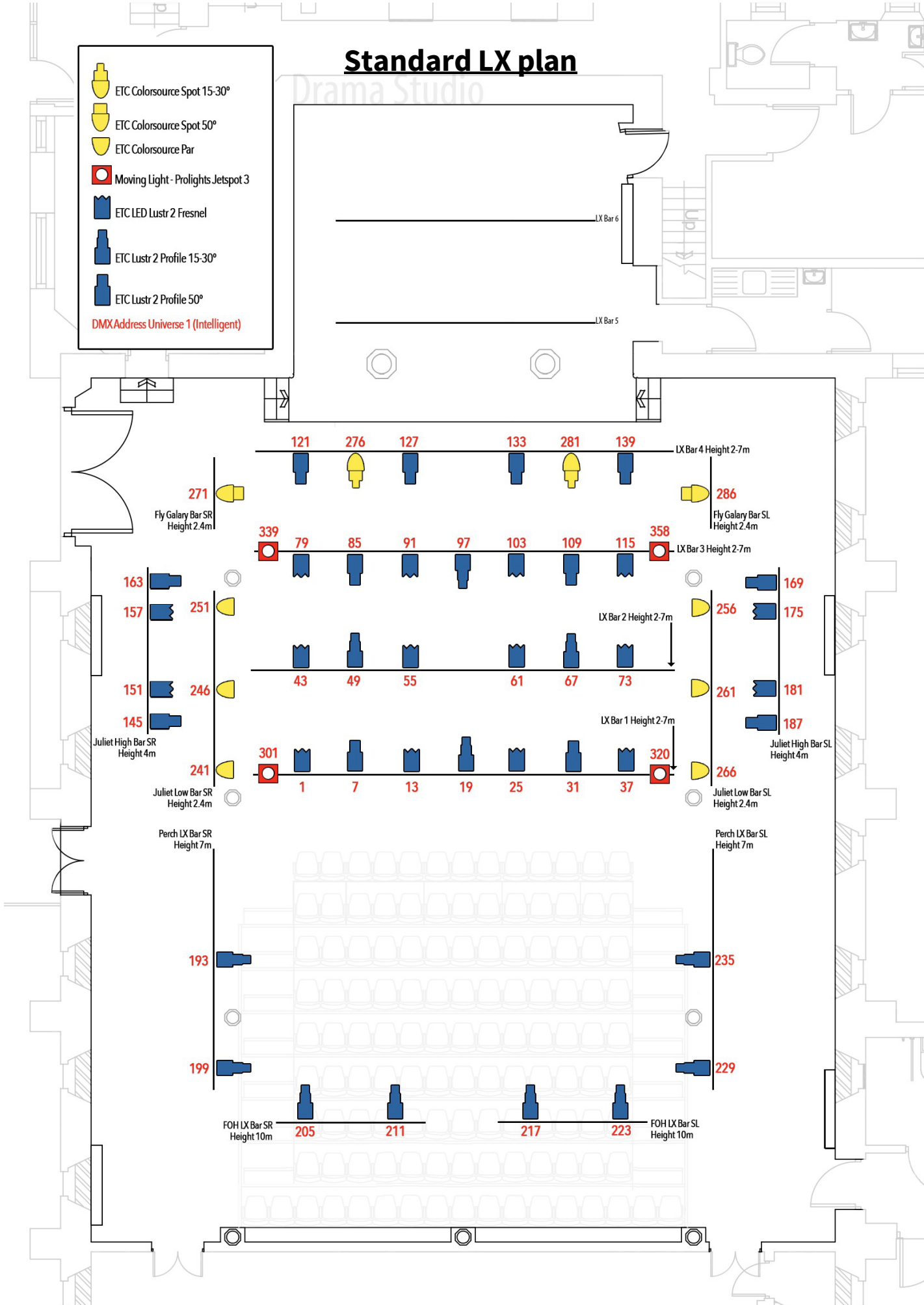
Item	SWL	Amount
Bow Shackle	1T	48
0.75m Wire Rope Sling	822kg	5
1m Wire Rope Sling	822kg	10
1.8m Wire Rope Sling	822kg	14
2m Wire Rope Sling	822kg	14
1m Fabric Sling	1T	1
6m Fabric Sling	1T	2
8M Fabric Sling	1T	4
Doughty Half Coupler	340kg	7
Doughty Double Clamp	750kg	2

# Standard LX plan

-  ETC Coloursource Spot 15-30°
-  ETC Coloursource Spot 50°
-  ETC Coloursource Par
-  Moving Light - Prolights.Jetspot 3
-  ETC LED Lustr 2 Fresnel
-  ETC Lustr 2 Profile 15-30°
-  ETC Lustr 2 Profile 50°

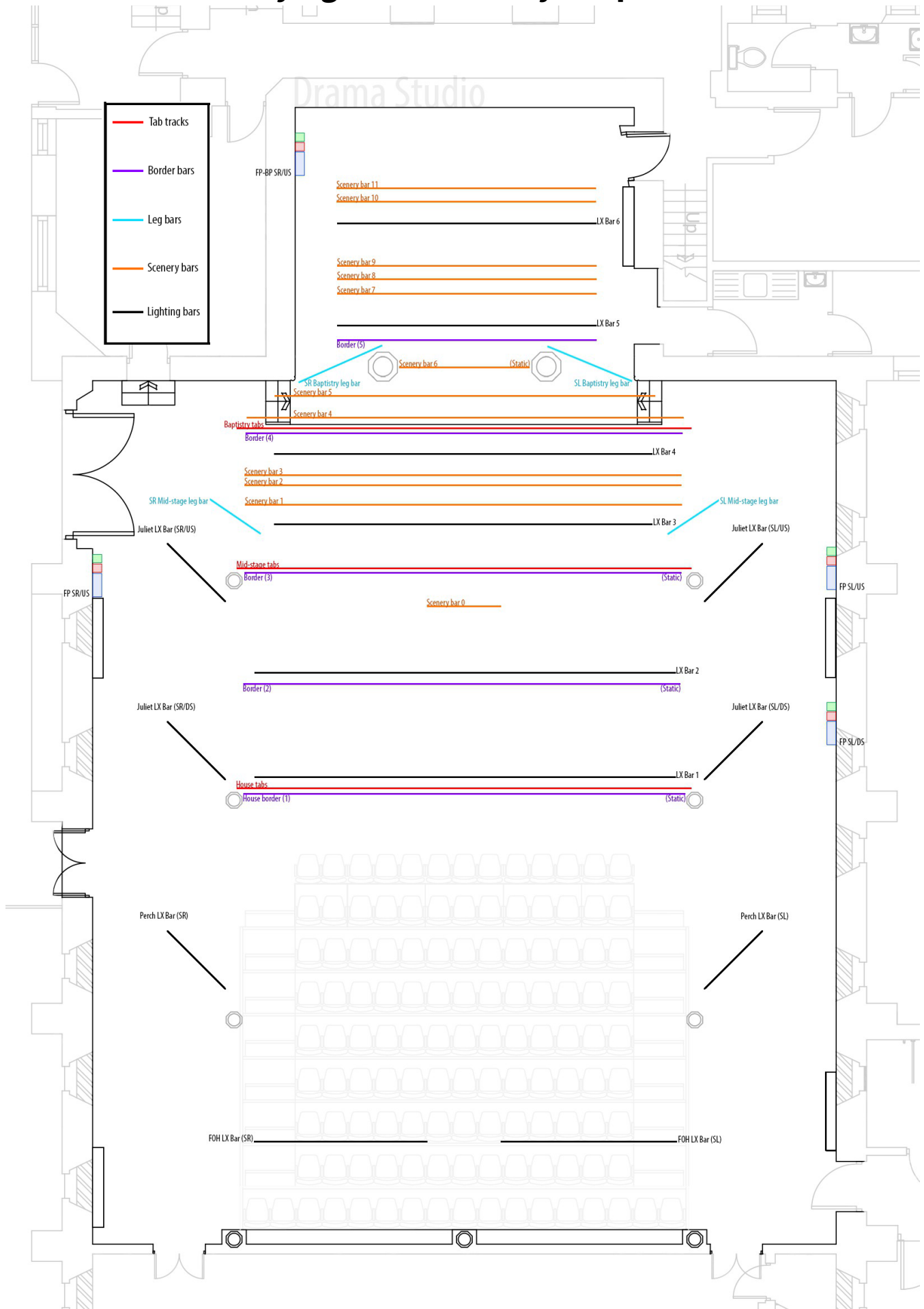
DMX Address Universe 1 (Intelligent)

Drama Studio

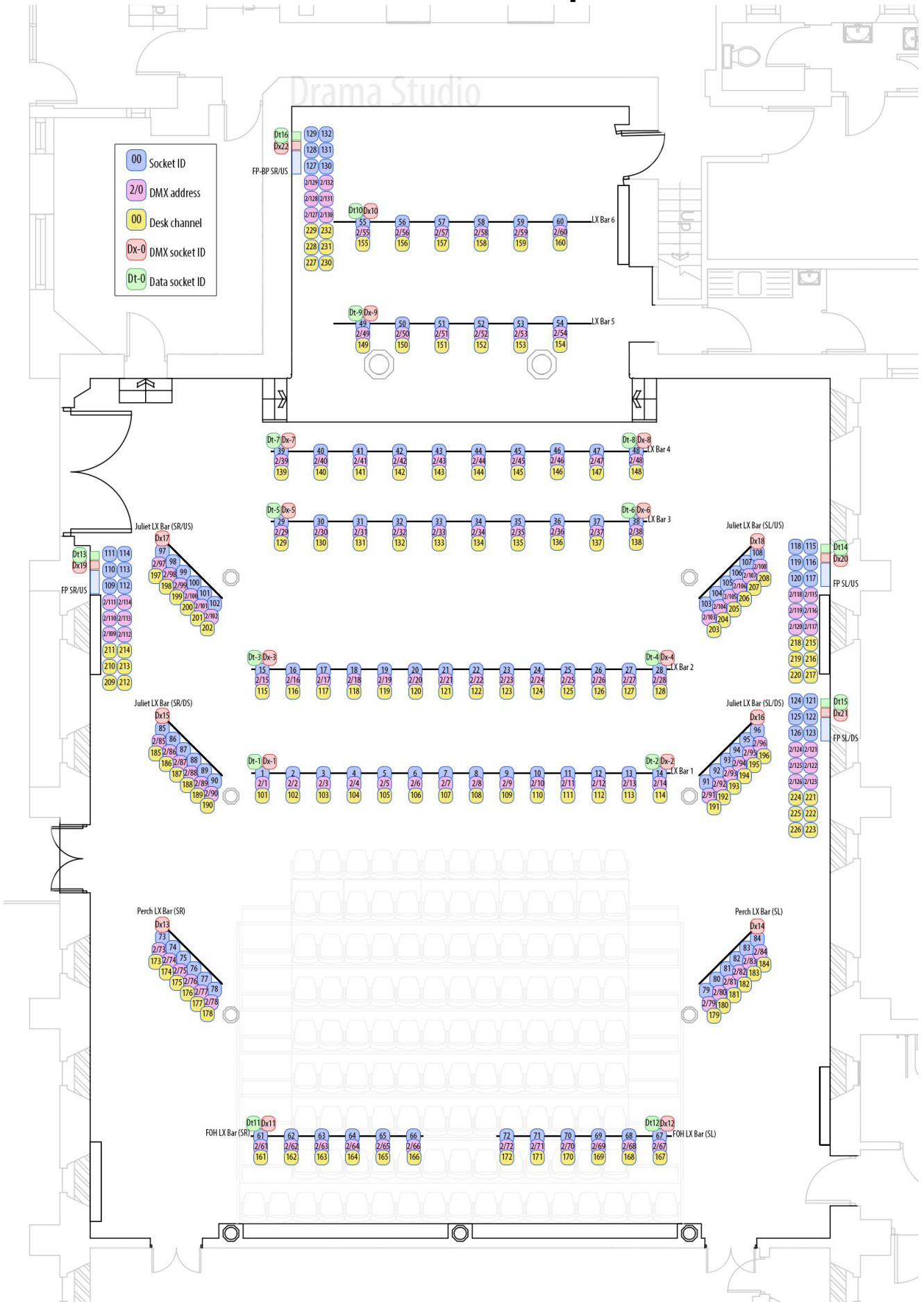




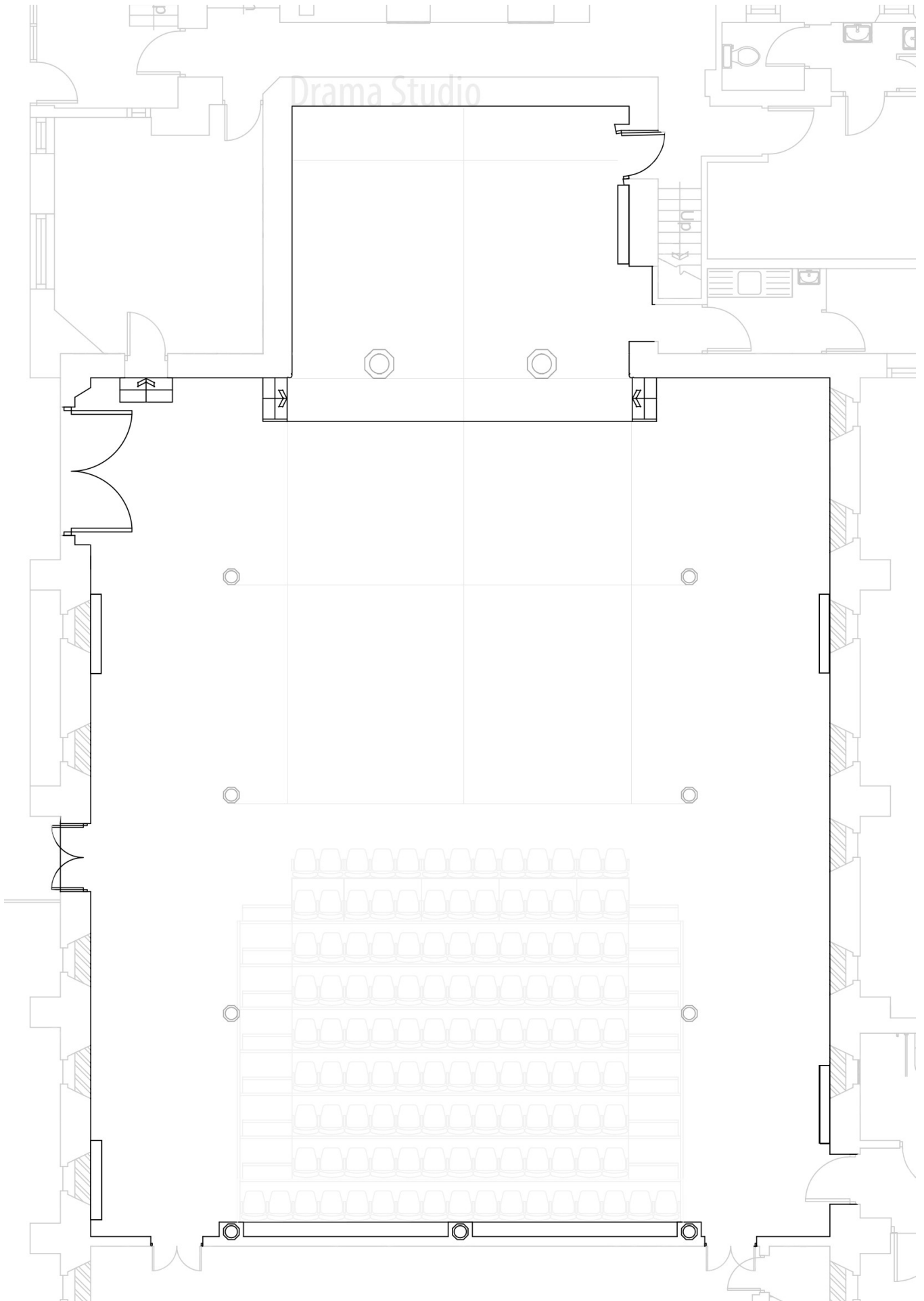
# Flying and stationary bar plan



# DS Power sockets plan



# Blank Drama Studio Plan



# Links

University of Sheffield Health and Safety Department home page:

<https://www.sheffield.ac.uk/departments/professional-services/health-and-safety>

University of Sheffield Work at Height policy and procedures:

<https://students.sheffield.ac.uk/media/811/download?attachment>

University of Sheffield blank risk assessment forms:

<https://students.sheffield.ac.uk/health-safety/risk-assessment>

Performance Venues home page:

<https://performancevenues.group.shef.ac.uk/>

# Contact information

For technical enquiries:

## **Technical**

### **Ryan Thompson**

Performance Venues Technician

Email:

ryan.thompson@sheffield.ac.uk

### **Stanley Chau**

Performance Venues Technician

Email: k.l.chau@sheffield.ac.uk

## **Operational**

### **Chris Leach**

Performance Venues Operations Manager

Tel: 0114 222 0200

Email: chris.leach@sheffield.ac.uk

## **General Enquiries**

Performance Venues Main Office

Tel: 0114 222 8888

Email: performancevenues@sheffield.ac.uk