



# The Octagon

## Venue Technical Specification

December 2024 v1.4

### Contacts

**Chris Leach**

Performance Venues Operations Manager

Tel : 0114 222 0200

Email : [chris.leach@sheffield.ac.uk](mailto:chris.leach@sheffield.ac.uk)

**Joel Borkin**

Performance Venues Technical Manager

Tel : +44 (0)787 358 9285

Email : [j.borkin@sheffield.ac.uk](mailto:j.borkin@sheffield.ac.uk)

### Contents

Location	2
Loading	3 - 4
Hall Configurations	5 - 7
Staging / Risers	7
Rigging	8
Power	9
Audio	10
Lighting	11 - 14
Video / Special FX	15
Facilities	16

# Location

## For the venue & public:

The Octagon Centre, Clarkson Street, Sheffield S10 2TQ

## For Load in & Deliveries:

Durham Rd, Broomhall, Sheffield S10 2JA

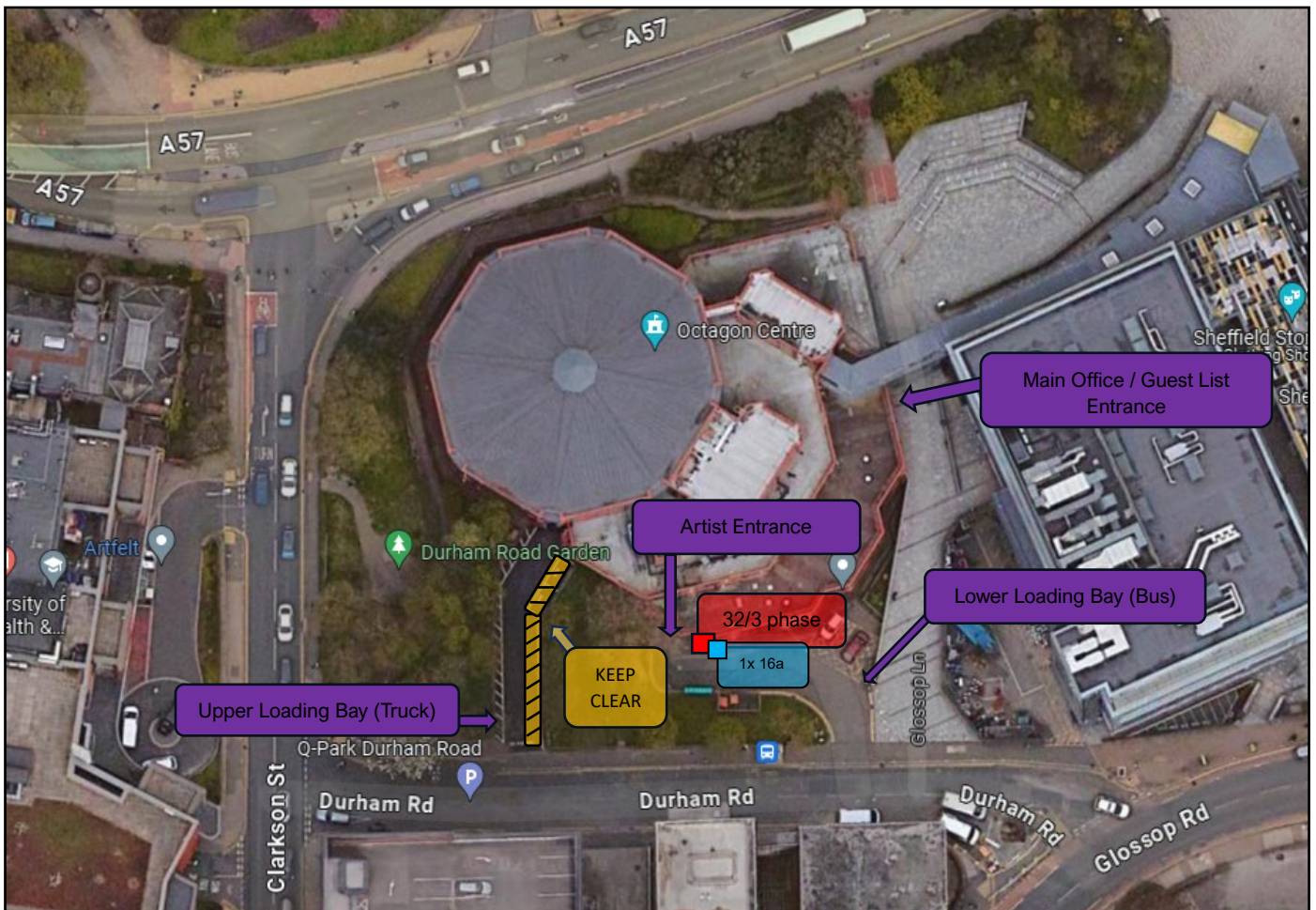
## What 3 Words for Upper Loading Bay (Truck):

///myself.dogs.arts

## What 3 Words for Lower Loading Bay (Bus):

///camp.exams.lovely

## Map



# Loading / Parking

Please be aware that ALL parking on university property is actively monitored 24/7 by parking wardens and you will be issued a parking ticket if you do not advance with us with at least 2 weeks notice, all your parking requirements.

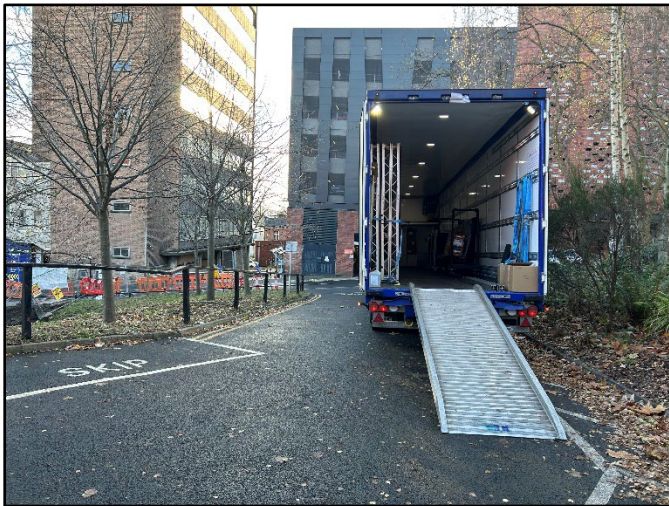
Please also keep completely clear all fire safety routes marked out on the bay and the map

The above map details the locations of the main loading areas for the Octagon. We can accommodate as standard;

- 1x Truck – Up to 26 tonnes as standard, please let us know if your production incorporates a larger truck or more than 1x 26 tonne truck.
- 1x Bus – Up to a 15 berth sleeper +trailer as standard, please let us know if your production incorporates a larger or more than 1x sleeper bus.
- 1x Runner – We can issue a temporary parking permit for a Splitter sized runner vehicle – please advance this with us with at least 2 weeks notice.

## Upper Loading Bay Truck Positioning

Please see above map for correct position of a truck in the upper load in bay. Please make sure your truck drivers are parked in the correct position upon arrival and before they clock off. Please see photo guides for correct truck positioning below as well;



### Additional (only in advance) Parking Map:

We can accommodate some additional parking for Busses / Splitters / Cars in advance. This additional parking is available only after discussion and agreement with us as this location serves as a loading bay for other businesses in the area. Please see this map below for additional parking location:



### Artist Entrance / Loading times:

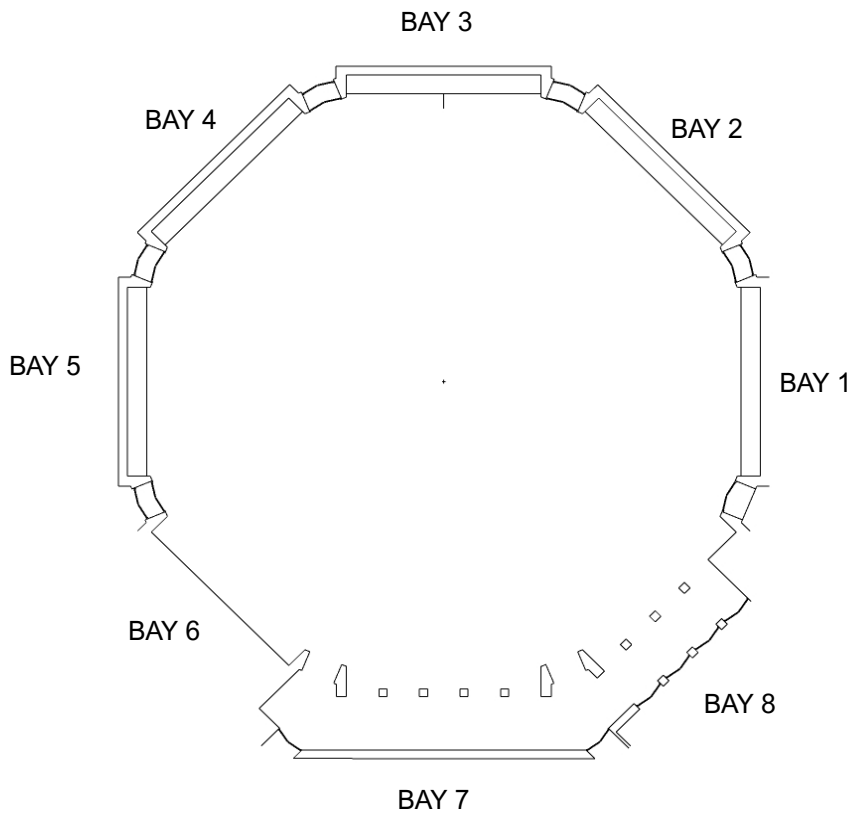
Please note: The Octagon Centre DOES NOT operate a 24/7 staffed artist entrance.

You will need to discuss access and load in times with us in advance

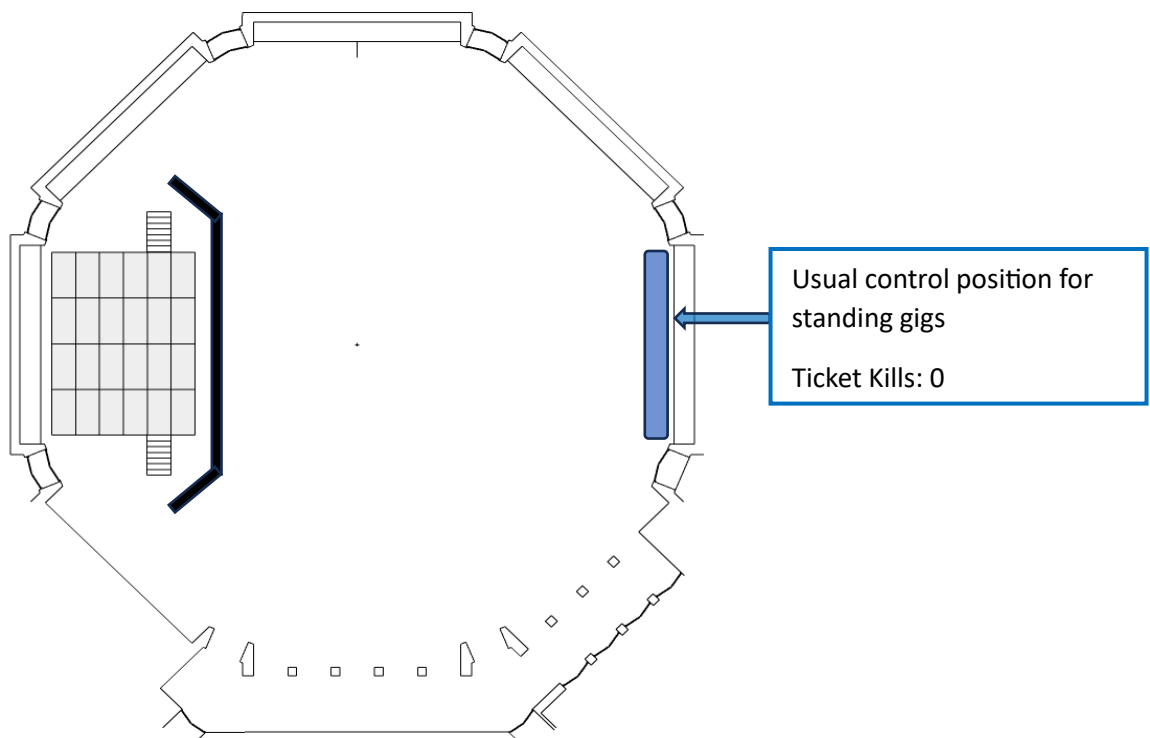
We can issue you access codes for bus power and artist entrance doors in advance.

# Hall Configurations

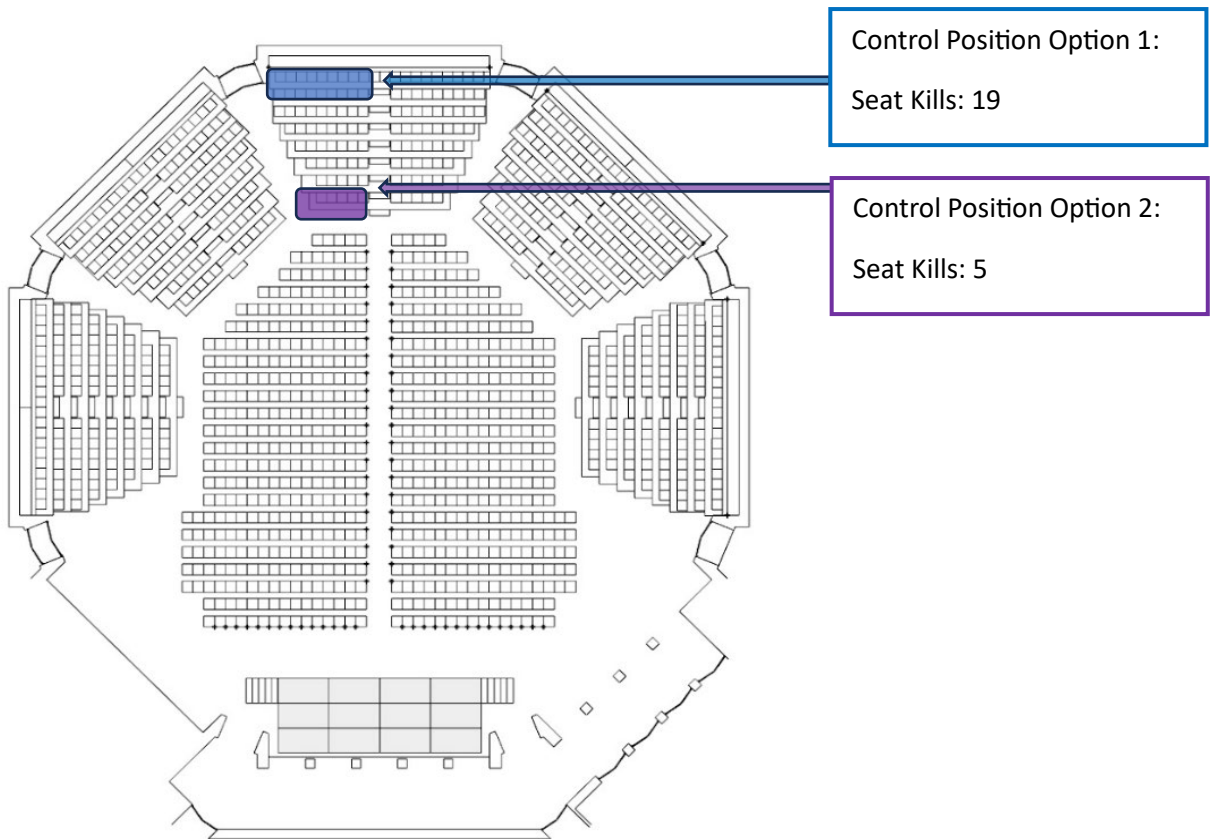
## Empty Hall | Bay Locations



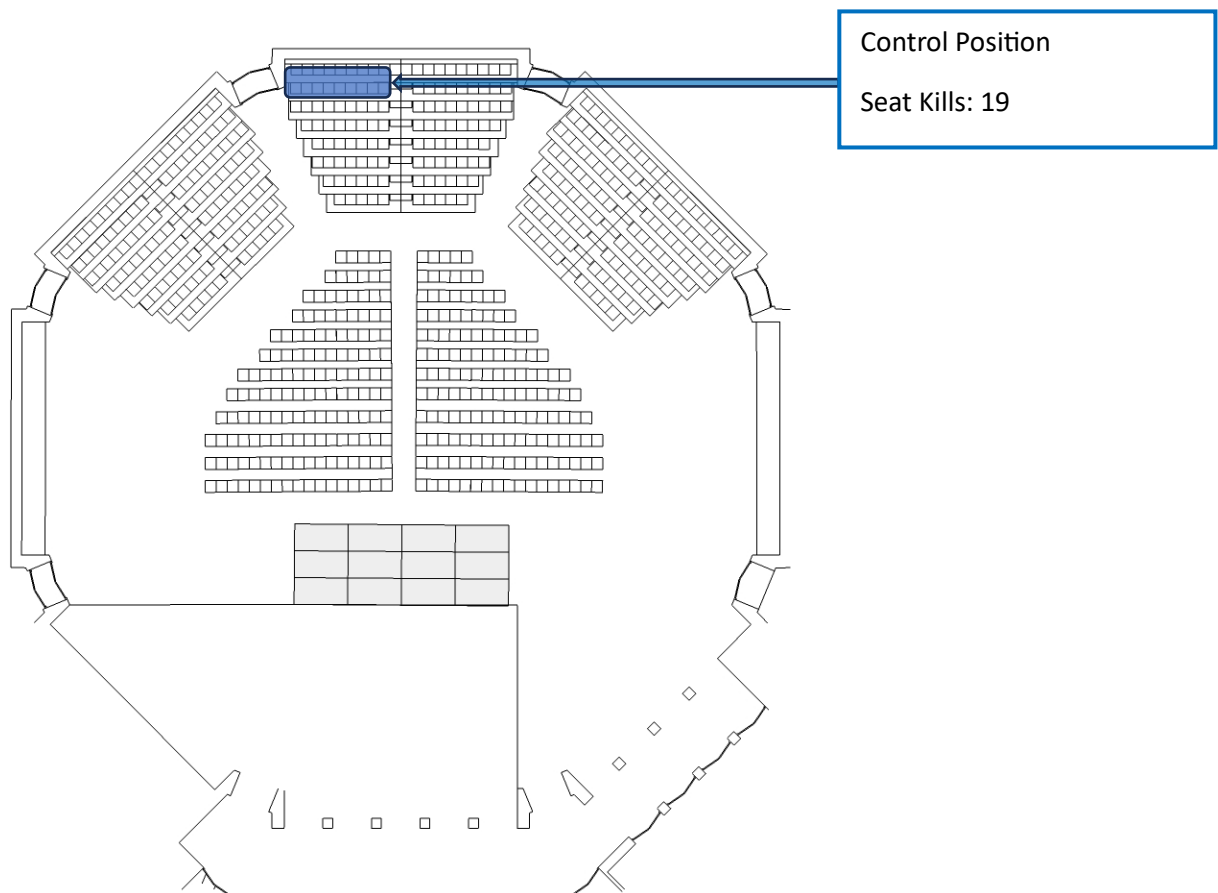
## Standing Gig (Stage in Bay 5) | Capacity: 1800

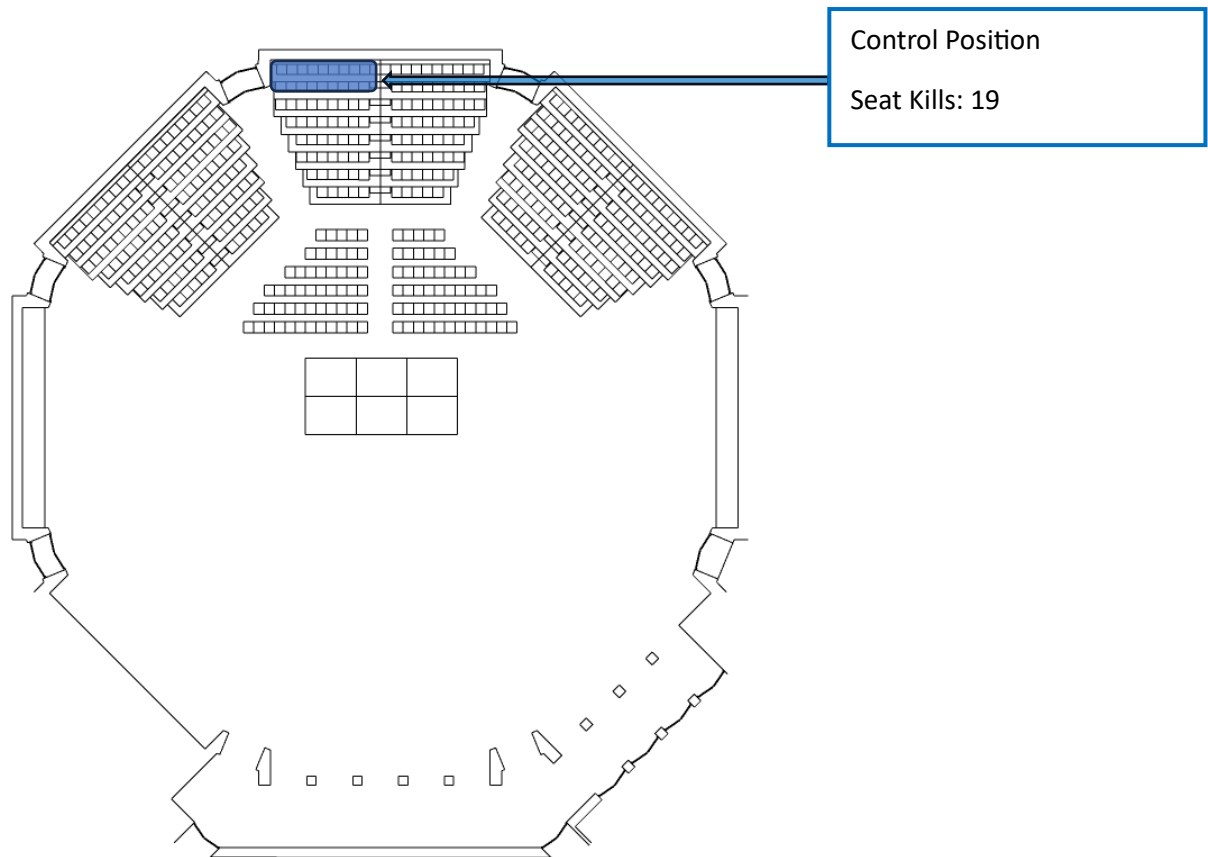


**Seated Gig (Stage in Bay 7) | Full Hall | Capacity: 1230**



**Seated Event | 3/4 Hall | Capacity: 660**





## Staging Options

Please discuss your preferred / required stage size with us in advance. The standard stage sizes that we offer are:

Width 32' x Depth 24' x Height 3' or 4'

Width 32' x Depth 16' x Height 3' or 4'

Width 32' x Depth 12' x Height 3', 4' or 18"

Width 24' x Depth 12' x Height 3', 4' or 18"

## Riser Options

Please discuss any required stage risers with us in advance. The use of our stager risers needs to be booked well in advance and it is not guaranteed they will be available.

The standard stage riser options that we offer are:

- 11x Prolight Stage Dex - 2 meter x 1 meter segments  
60cm (2ft) & 30cm (1ft) legs to suit
- 8x 2000 Series 2 Mobile Folding Wheeling Stage – 8ft by 6ft segments  
18" or 2ft height options

# Rigging

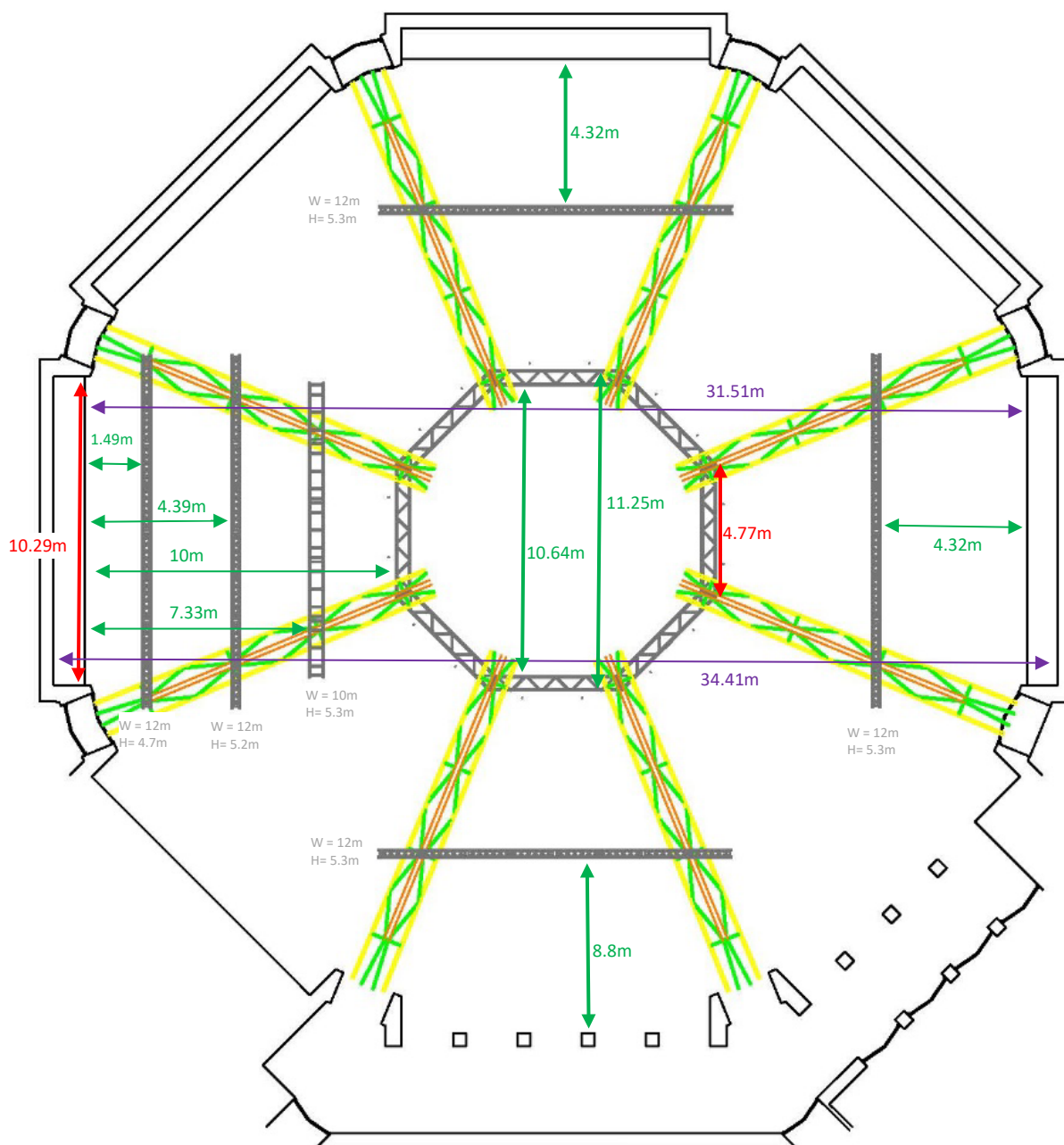
## Installed trusses:

5x 12m Prolyte H30v trusses, hung in bar bay, bay 1, bay 3 and two in bay 5

1x 10m Prolyte H52v truss, hung in Bay 5 down Stage

1x Octagonal Prolyte H52v truss, hung in the centre of the auditorium

## Rigging Plot with Dimensions / Trim Heights:



## Rigging Options

We are happy to discuss the options for flying touring production equipment on a case by case basis.

SWL's of each house truss vary. We can discuss what's possible in advance with you.



# Power

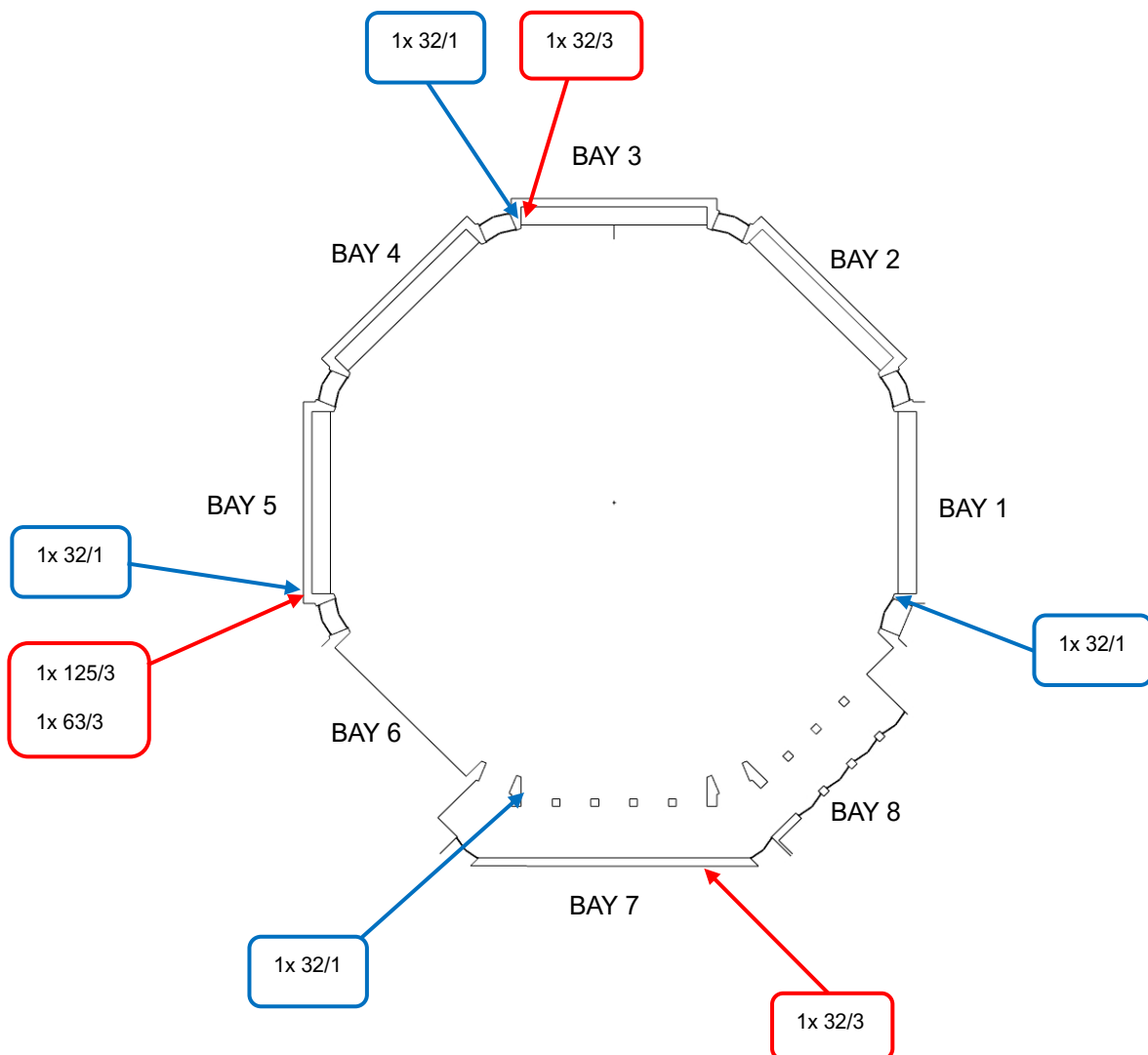
## Mains Outlets:

- 1x 125amp 3phase supply with 30mA RCD – Bay 5 SR
- 1x 63amp 3phase supply with 30mA RCD – Bay 5 SR
- 1x 32amp 3phase supply with 30mA RCD – located in control booth above Bay 7
- 4x 32amp 1phase supply with 30mA RCD – Bay 1, 3, 5 & 7
- 4x 16amp single phase, Bay 1, 3, 5, 7

## Temporary power distribution boxes:

- 1x 125a to 6x32amp and 18x16 amp distro box
- 1x 63a to 6x 32/1 & 6x 6x 16/1 distro box
- 3x 32amp to 4x16amp distro box
- 16x 16amp to 12x13amp distro box

## Mains Outlets Locations:



# Audio

## PA

### Gig Bay Orientation

Main L&R	4x L'acoustics Arcs Focus per side (flown line array)
Outfills	2x L'acoustics Arcs (1x Focus, 1x Wide per side) (flown)
Centre Fill	1x L'acoustics 12xt (flown)
Subs	2x ks28 & 8x sb18 (ground)
Delays	Choice of 3x or 5x L'acoustics 12xt dependant on event (flown)

### Bar Bay Orientation

Main L&R	2x L'acoustics x12 a side (ground)
Front Fills	4x L'acoustics x8 (on stage)
Subs	2x ks28 & 4x sb18 (ground)
Delays	Choice of 3x or 5x L'acoustics 12xt dependant on event (flown)

### System Control

LA Network Manager via touchscreen mac mini

Smart Monitoring w/ 3x beyer MM1 measurement mics

### Consoles + Stage Racks

**FOH** A&H Dlive c3500 + cdm48

**MONs** Digico s31 + d-rack(32/16) OR Yamaha QL1 + 1x rio 3224 & 1x rio1608

### Monitors

8x L'acoustics x12 over 8 mixes (inc. cue wedge)

### Line System

Full 48way split with: 3x 48way veam outlets (FOH / MONs / Spare or Broadcast) & 6x 12way sat boxes

### Multicore

Fully integrated patch system inc. 2x direct cat6 audio tie lines / 4x Luminex cat6 mixed use tie lines / 2x male, 2x female xlr tie lines.

### Microphones

Typical concert grade mic + DI package

4way Sennheiser EW-DX radio mic system w/ 4x handheld / 4x headset / 4x lapel options into 4x receivers

### Stands

20x tall booms

10x short booms

### Stage Power

8x 16a Toblerone distros

# Lighting

## Lighting desk

Avolites Arena

## Intelligent Fixtures

8x Aytron Karif LT Spot

6x Chauvet Rogue R2 Spot

4x Chauvet Rogue R2X Spot

12x Chauvet Rogue R3 Spot

12x Chauvet Rogue R3 Wash

8x Prolights Diamond 19

16x Chauvet COLORado Tri-Tour

16x Chauvet COLORado SOLO 1

## Generic Fixtures

26x Selecon Rama 1k Fresnel

8x Iris 1 Flood

## Dimmers:

Zero88 Spice Pro Rack - 48x 2.3kW 10a circuits

## DMX routing:

Main auditorium stage level: 9 in + 8 out

Main auditorium ceiling: 16 out

Centre Truss: 8 out via Artnet

## DMX Patch bay:

Chauvet NET-X II 8 way Art-Net

## Lighting Accessories

1x Unique 2.1 Hazer

## Universes

1. US / MS Gig Bay
2. DS Gig Bay
3. Gig Spare
4. Octagon Truss – Movers
5. Octagon Truss – Pars
6. Outer Bars
7. Dimmer Rack
8. Fluro Array
9. Spare
10. Spare
11. Spare
12. Spare

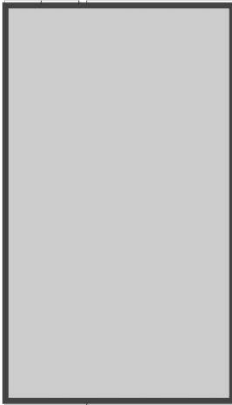
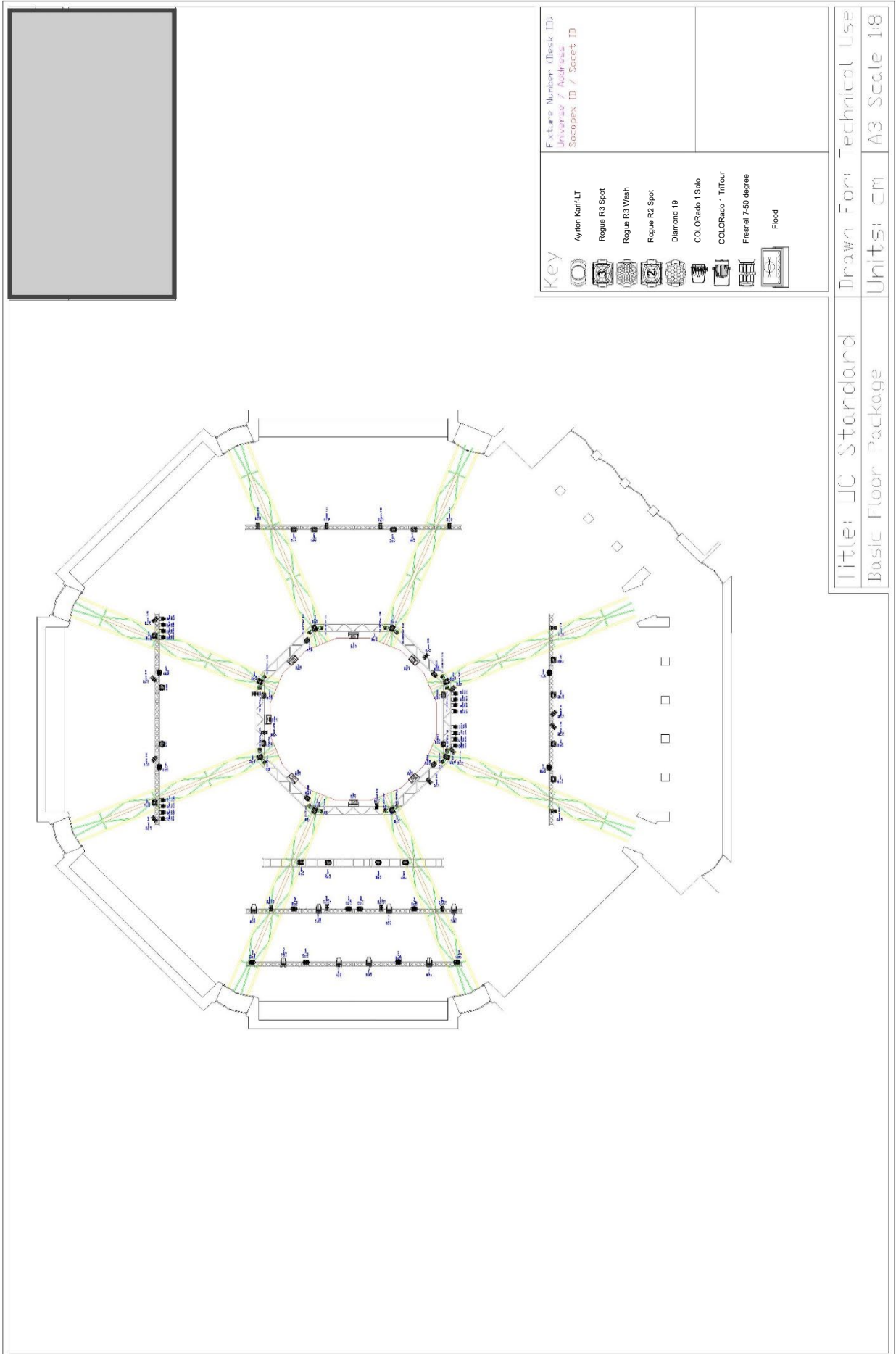
# LX Rig Patch Sheet

Page 1 of 2

Fixture Name	Manufacturer	Model	Short Name	Legend 2	Note	Address	Universe
101 Karif-LT	Ayrton	Standard, 34 DMX	Karif-LT	Karif-LT	US TRUSS	1	1
102 Karif-LT	Ayrton	Standard, 34 DMX	Karif-LT	Karif-LT	US TRUSS	35	1
103 Karif-LT	Ayrton	Standard, 34 DMX	Karif-LT	Karif-LT	US TRUSS	69	1
104 Karif-LT	Ayrton	Standard, 34 DMX	Karif-LT	Karif-LT	US TRUSS	103	1
105 Karif-LT	Ayrton	Standard, 34 DMX	Karif-LT	Karif-LT	MS TRUSS	137	1
106 Karif-LT	Ayrton	Standard, 34 DMX	Karif-LT	Karif-LT	MS TRUSS	171	1
107 Karif-LT	Ayrton	Standard, 34 DMX	Karif-LT	Karif-LT	MS TRUSS	205	1
108 Karif-LT	Ayrton	Standard, 34 DMX	Karif-LT	Karif-LT	MS TRUSS	239	1
201 Rogue R3 Wash	Chauvet	21 DMX	RogueR3 V	RogueR3	US TRUSS	273	1
202 Rogue R3 Wash	Chauvet	21 DMX	RogueR3 V	RogueR3	US TRUSS	294	1
203 Rogue R3 Wash	Chauvet	21 DMX	RogueR3 V	RogueR3	US TRUSS	315	1
204 Rogue R3 Wash	Chauvet	21 DMX	RogueR3 V	RogueR3	US TRUSS	336	1
205 Rogue R3 Wash	Chauvet	21 DMX	RogueR3 V	RogueR3	MS TRUSS	357	1
206 Rogue R3 Wash	Chauvet	21 DMX	RogueR3 V	RogueR3	MS TRUSS	378	1
207 Rogue R3 Wash	Chauvet	21 DMX	RogueR3 V	RogueR3	MS TRUSS	399	1
208 Rogue R3 Wash	Chauvet	21 DMX	RogueR3 V	RogueR3	MS TRUSS	420	1
209 Rogue R3 Wash	Chauvet	21 DMX	RogueR3 V	RogueR3	BB TRUSS	211	6
210 Rogue R3 Wash	Chauvet	21 DMX	RogueR3 V	RogueR3	BB TRUSS	232	6
211 Rogue R3 Wash	Chauvet	21 DMX	RogueR3 V	RogueR3	B5 TRUSS	253	6
212 Rogue R3 Wash	Chauvet	21 DMX	RogueR3 V	RogueR3	B5 TRUSS	274	6
301 Rogue R3 Spot	Chauvet	25 DMX	Rg R3 Sp	Rg R3 Sp	DS TRUSS	1	2
302 Rogue R3 Spot	Chauvet	25 DMX	Rg R3 Sp	Rg R3 Sp	DS TRUSS	26	2
303 Rogue R3 Spot	Chauvet	25 DMX	Rg R3 Sp	Rg R3 Sp	DS TRUSS	51	2
304 Rogue R3 Spot	Chauvet	25 DMX	Rg R3 Sp	Rg R3 Sp	DS TRUSS	76	2
305 Rogue R3 Spot	Chauvet	25 DMX	Rg R3 Sp	Rg R3 Sp	OCT TRUSS	1	4
306 Rogue R3 Spot	Chauvet	25 DMX	Rg R3 Sp	Rg R3 Sp	OCT TRUSS	26	4
307 Rogue R3 Spot	Chauvet	25 DMX	Rg R3 Sp	Rg R3 Sp	OCT TRUSS	51	4
308 Rogue R3 Spot	Chauvet	25 DMX	Rg R3 Sp	Rg R3 Sp	OCT TRUSS	76	4
309 Rogue R3 Spot	Chauvet	25 DMX	Rg R3 Sp	Rg R3 Sp	OCT TRUSS	101	4
310 Rogue R3 Spot	Chauvet	25 DMX	Rg R3 Sp	Rg R3 Sp	OCT TRUSS	126	4
311 Rogue R3 Spot	Chauvet	25 DMX	Rg R3 Sp	Rg R3 Sp	OCT TRUSS	151	4
312 Rogue R3 Spot	Chauvet	25 DMX	Rg R3 Sp	Rg R3 Sp	OCT TRUSS	176	4
401 DIAMOND19	Prolights	Standard	DIAMOND	DIAMOND	OCT TRUSS	201	4
402 DIAMOND19	Prolights	Standard	DIAMOND	DIAMOND	OCT TRUSS	220	4
403 DIAMOND19	Prolights	Standard	DIAMOND	DIAMOND	OCT TRUSS	239	4
404 DIAMOND19	Prolights	Standard	DIAMOND	DIAMOND	OCT TRUSS	258	4
405 DIAMOND19	Prolights	Standard	DIAMOND	DIAMOND	OCT TRUSS	277	4
406 DIAMOND19	Prolights	Standard	DIAMOND	DIAMOND	OCT TRUSS	296	4
407 DIAMOND19	Prolights	Standard	DIAMOND	DIAMOND	OCT TRUSS	315	4
408 DIAMOND19	Prolights	Standard	DIAMOND	DIAMOND	OCT TRUSS	334	4
501 Rogue R2 Spot	Chauvet	Advanced, 21 DMX	Rogue R2S	Rogue R2S	BB TRUSS	1	6
502 Rogue R2 Spot	Chauvet	Advanced, 21 DMX	Rogue R2S	Rogue R2S	BB TRUSS	22	6
503 Rogue R2 Spot	Chauvet	Advanced, 21 DMX	Rogue R2S	Rogue R2S	BB TRUSS	43	6
504 Rogue R2 Spot	Chauvet	Advanced, 21 DMX	Rogue R2S	Rogue R2S	BB TRUSS	64	6
505 Rogue R2 Spot	Chauvet	Advanced, 21 DMX	Rogue R2S	Rogue R2S	B7 TRUSS	85	6
506 Rogue R2 Spot	Chauvet	Advanced, 21 DMX	Rogue R2S	Rogue R2S	B7 TRUSS	106	6
507 Rogue R2 Spot	Chauvet	Advanced, 21 DMX	Rogue R2S	Rogue R2S	B7 TRUSS	127	6
508 Rogue R2 Spot	Chauvet	Advanced, 21 DMX	Rogue R2S	Rogue R2S	B7 TRUSS	148	6
509 Rogue R2 Spot	Chauvet	Advanced, 21 DMX	Rogue R2S	Rogue R2S	B5 TRUSS	169	6
510 Rogue R2 Spot	Chauvet	Advanced, 21 DMX	Rogue R2S	Rogue R2S	B5 TRUSS	190	6
601 COLORado 1 Solo	Chauvet	TR16, 17 DMX	CRdo1 Sol	CRdo1 S	B5 TRUSS	295	6
602 COLORado 1 Solo	Chauvet	TR16, 17 DMX	CRdo1 Sol	CRdo1 S	B5 TRUSS	312	6
603 COLORado 1 Solo	Chauvet	TR16, 17 DMX	CRdo1 Sol	CRdo1 S	B5 TRUSS	329	6
604 COLORado 1 Solo	Chauvet	TR16, 17 DMX	CRdo1 Sol	CRdo1 S	B5 TRUSS	346	6
605 COLORado 1 Solo	Chauvet	TR16, 17 DMX	CRdo1 Sol	CRdo1 S	B5 TRUSS	363	6
606 COLORado 1 Solo	Chauvet	TR16, 17 DMX	CRdo1 Sol	CRdo1 S	B5 TRUSS	380	6
607 COLORado 1 Solo	Chauvet	TR16, 17 DMX	CRdo1 Sol	CRdo1 S	B5 TRUSS	397	6

FixtureNur Name	Manufactu Mode	ShortNam	Legend2 Note	Address	Universe
715 COLORado 1 Tri Tour	Chauvet Tour V1, 10 DMX	CR1TriTour	CR1TriTc TRUSS WA	141	5
716 COLORado 1 Tri Tour	Chauvet Tour V1, 10 DMX	CR1TriTour	CR1TriTc TRUSS WA	151	5
901 Fresnel 7-50 degree			OCT BB 1	1	7
902 Fresnel 7-50 degree			OCT BB2	2	7
903 Fresnel 7-50 degree			OCT BB3	3	7
904 Fresnel 7-50 degree			OCT BB4	4	7
905 Fresnel 7-50 degree			OCT GB 1	5	7
906 Fresnel 7-50 degree			OCT GB 2	6	7
907 Fresnel 7-50 degree			OCT GB 3	7	7
908 Fresnel 7-50 degree			OCT GB 4	8	7
909 Fresnel 7-50 degree			INNER BAC	9	7
910 Fresnel 7-50 degree			SPARE	10	7
911 Fresnel 7-50 degree			BB FRES	11	7
912 Fresnel 7-50 degree			BB FRES	12	7
913 Fresnel 7-50 degree			BB FRES	13	7
914 Fresnel 7-50 degree			BB FRES	14	7
915 Fresnel 7-50 degree			B5 FRES	15	7
916 Fresnel 7-50 degree			B5 FRES	16	7
917 Fresnel 7-50 degree			B5 FRES	17	7
918 Fresnel 7-50 degree			B5 FRES	18	7
919 Fresnel 7-50 degree			B7 FRES	19	7
920 Fresnel 7-50 degree			B7 FRES	20	7
921 Fresnel 7-50 degree			B7 FRES	21	7
922 Fresnel 7-50 degree			B7 FRES	22	7
925 Fresnel 7-50 degree			GB BLIND	25	7
926 Fresnel 7-50 degree			GB BLIND	26	7
927 Fresnel 7-50 degree			GB BLIND	27	7
928 Fresnel 7-50 degree			GB BLIND	28	7
931 Flood			FLOOD B1	31	8
932 Flood			FLOOD B2	32	8
933 Flood			FLOOD B3	33	8
934 Flood			FLOOD B4	34	8
935 Flood			FLOOD B5	35	8
936 Flood			FLOOD B6	36	8
937 Flood			FLOOD B7	37	8

# LX Rig Plot



**Key**

- Ayrton KainiLT
- Regue R3 Spot
- Regue R3 Wash
- Regue R2 Spot
- Diamond 19
- COLORado 1 Solo
- COLORado 1 Trifour
- Fresnel 7-50 degree
- Flood

Fixture Number / Desk ID / Universe / Address / Socket ID / Socket ID

Title: JC Standard  
Basic Floor Package

Drawn From: Technical Use

Units: cm A3 Scale 1:8

# Video

## Bar Bay

We have an in house and installed LCD screen available for shows hosted in the Bar Bay (Bay 7) orientation.

Spec:

- 4m wide x 2.3m tall HD screen – made up of 9x 60” display panels
- 16:9 ratio
- HDMI connection at various points in the room

## Gig Bay

We have a projector and front projector screen solution available for events hosted in the Gig Bay (Bay5) orientation.

Spec:

- 1x Hitachi CP-X5550 5,500 lumen HD projector(s)
- 1x Fast fold 16:9 projector screen – 405cm W x 228cm H viewing area
- Various connectivity points via Just Add Power 4k TX / RX HDMI to Cat5 boxes

# Special Effects

## Pyro

Please note: We are a no pyro venue. The use of pyrotechnics of any kind are strictly prohibited inside the octagon centre venues with no exceptions.

## Confetti Canons

We are happy to accept the use of confetti cannons, but a cleaning fee will be charged on the venue settlement – to be discussed in advance.

## Other

We are happy to discuss any other type of special effect being used in advance.

# Facilities

## Internet

High speed open access wifi across entire venue

High speed wired cat5 access point in Production Office

## Dressing Rooms: Up to 8 usable dressing room spaces:

Meeting Room 1: up to 20 people  
suggested use: Security room

Meeting Room 2: up to 10 people  
suggested use: Support band room

Meeting Room 3: up to 10 people  
suggested use: Crew room

Meeting Room 4: up to 15 people  
suggested use: Main Dressing Room

Production Office: up to 3 people  
suggested use: Production office / Rep's office

Production Room 1 / up to 4 people  
Small Kitchen suggested use: Production office / Rep's office / Small prep kitchen

Production Room 2: up to 4 people  
Suggested use: Production office / Opening act dressing room

Council Chamber: up to 30 people  
suggested use: Catering / Overspill

2x shower cubicles

Male & Female toilet blocks

Accessible toilet